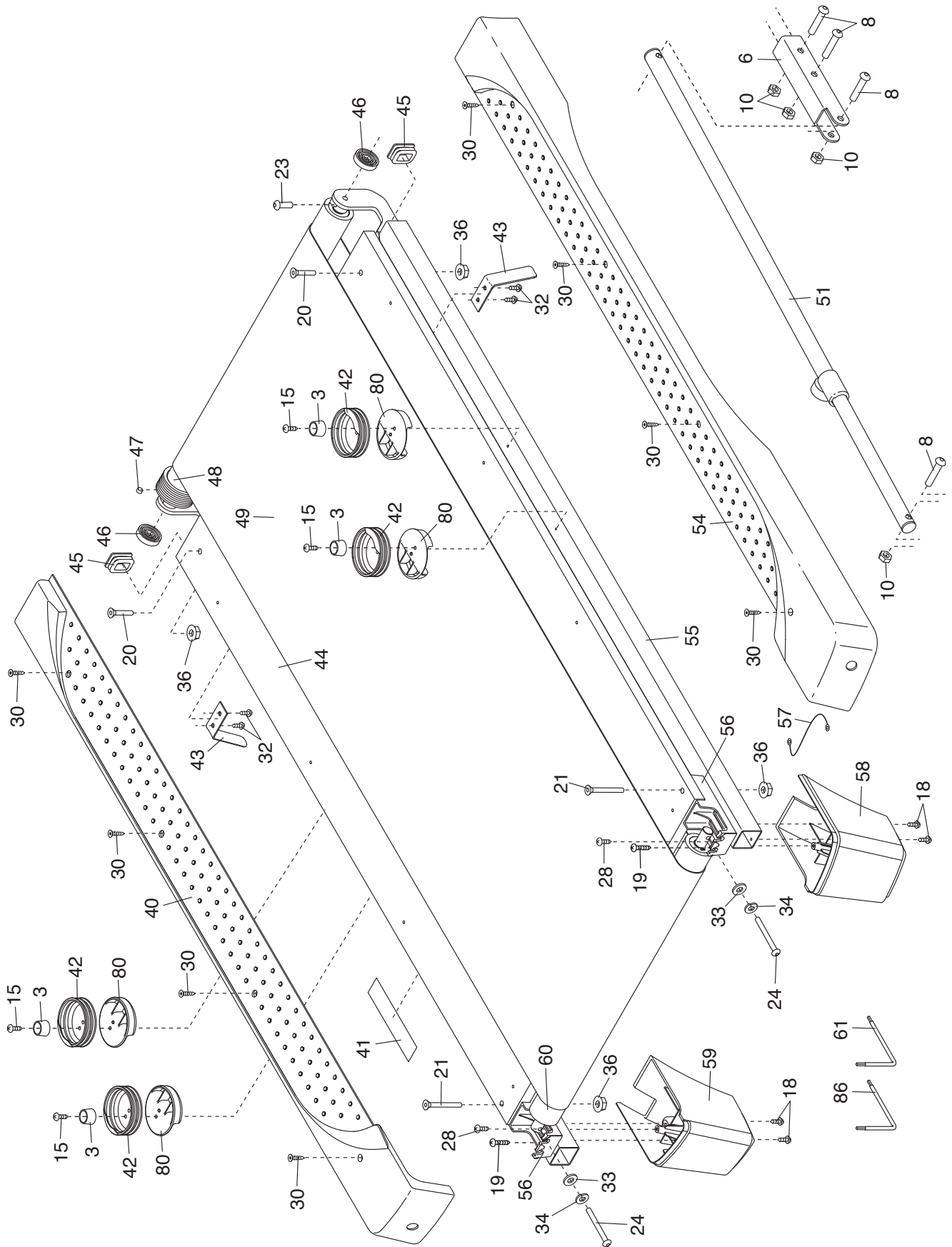


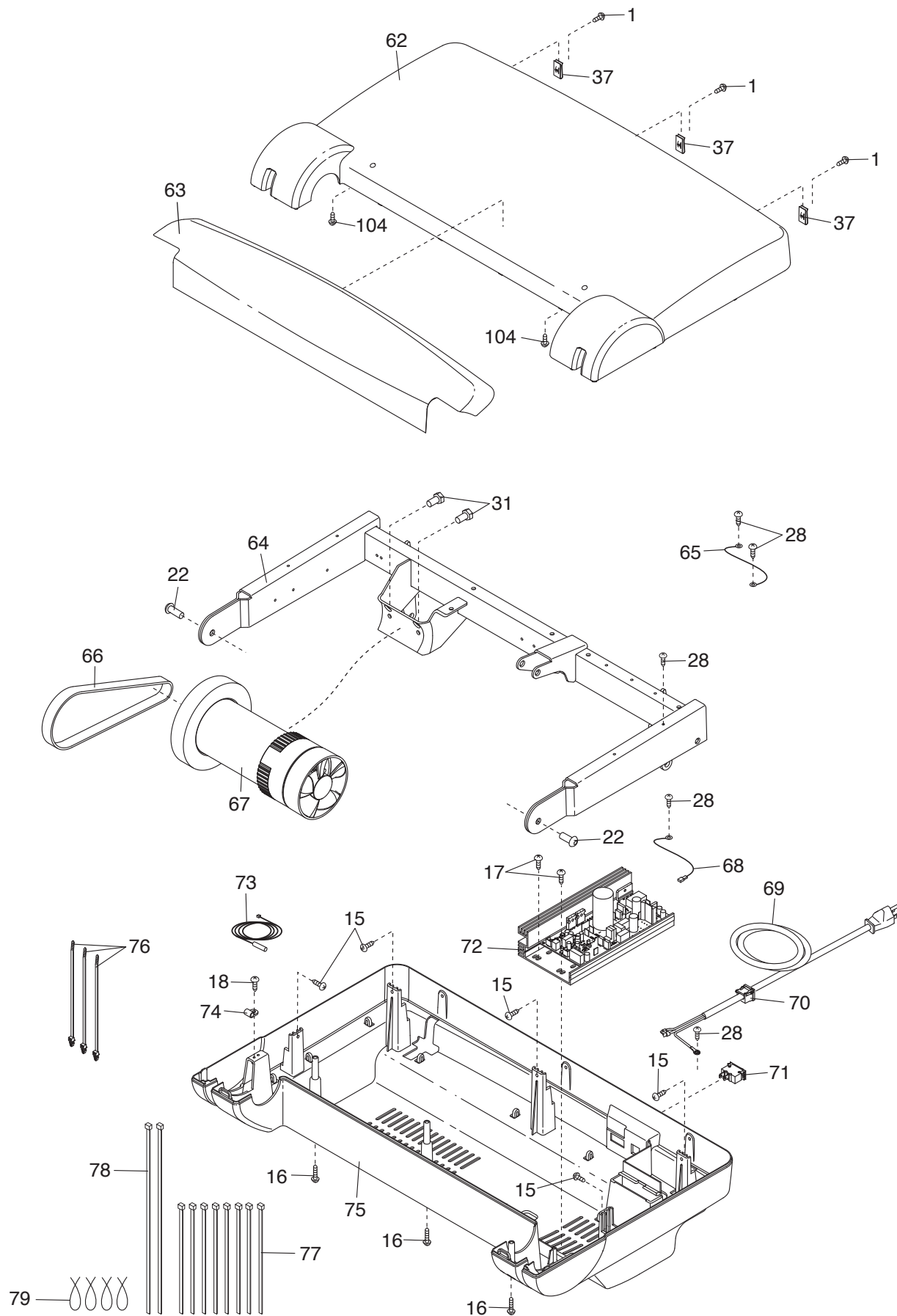
EXPLODED DRAWING A

Model No. PFTL59510.0 R0212B



EXPLODED DRAWING B

Model No. PFTL59510.0 R0212B



This diagram is an exploded view of a mechanical assembly, likely a piece of industrial equipment. It shows the following components and their assembly relationships:

- Top Section:** A long horizontal arm (82) is connected to a vertical support (84) via a bracket (38). A curved arm (107) is also shown, connected to the vertical support (84) via a bracket (38) and a cable (87). The curved arm (107) has several rollers (1) and is secured with bolts (12, 9, 2, 1).
- Vertical Support (84):** A large vertical plate that houses a motor (97) and a gear mechanism (90, 94, 10, 5). It is secured with bolts (4, 13, 11, 14, 7, 11).
- Base Frame:** A sturdy frame (95) consisting of two main horizontal beams and a central vertical support. It is secured with bolts (92, 90, 5, 27, 35, 89).
- Bottom Section:** A horizontal beam (91) is connected to the base frame (95) via a bracket (38) and a cable (87). It is secured with bolts (4, 13, 11, 14, 7, 11).
- Other Components:** A motor (97) is mounted on the base frame (95). A gear mechanism (90, 94, 10, 5) is also shown. A cable (87) runs along the frame. A bracket (38) is used to secure various parts. A roller (96) is shown at the bottom left.

The diagram uses dashed lines to indicate the assembly path and alignment of the parts. The numbers 1 through 107 identify each individual component.

34

EXPLODED DRAWING D

Model No. PFTL59510.0 R0212B

